

## No. 167 Summer 2018

**Strawberry Hill Residents' Association** which is run by a committee of volunteers, exists to protect the character and environment of Strawberry Hill. SHRA also believes in the fostering of community spirit and keeping residents aware of the many treasures of our lovely part of Twickenham and any threats to its character.

All residents within the boundaries of Strawberry Hill are automatically members of the Association.

## Supporting SHRA

The Association needs funds to provide information (via the SHRA Bulletin, website and various social media), and to put on local events (such as the AGM and social gatherings). We ask for an annual subscription, but do not make the payment of this essential for receipt of the advantages of membership. The subscription of £5 (minimum) has not been raised for many years and is currently paid by just a small minority. However, if we are to have sufficient funds to continue

and to enable us to adequately protect the area, we are asking for more households to subscribe. The subscription may otherwise have to increase in the near future.

It is possible to pay by dropping the money (or cheque) with the form below into the Post Office in Tower Road or at the Treasurer's house, 2 Hollies Close. We also have a standing order form, available on request from the Treasurer – Cathy Bird, email: [information@SHRA.org.uk](mailto:information@SHRA.org.uk) Please help, to ensure that SHRA can continue to operate successfully. Thank you.



**Get-together in Radnor Gardens**  
 Sunday 2<sup>nd</sup> September  
 3.00pm – 5.30pm

At the recent AGM, residents suggested that SHRA continue to organise events for residents and their families.

We would like to invite all residents to come to a late summer Get-together in Radnor Gardens, to meet up with neighbours, eat and drink at the café (which will be licenced for sale of wine and beer) and listen to some music.

Children's drinks and treats will be provided free by SHRA and an ensemble from the Richmond Brass Band will be playing a mixture of jazz, classic and traditional music for us. Do come along and enjoy a local event. We are hoping that the canopy at the café will be completed, so there should be shelter from the elements.

## Annual General Meeting

Strawberry Hill Residents' Association AGM was held on 25 April 2018 at its usual venue, Strawberry Hill Golf Club.

Regular reports were made by the Chairman and Treasurer. These were followed by a presentation on the restoration of Pope's Grotto (Mike Cherry) and the Lost Treasures Exhibition at Strawberry Hill House (Emily Pugh).

The findings of a survey carried out at the meeting were summarised by new committee member, Andrew Miller. Those present had made various suggestions for future activities of the Association. These included: a quiz night, a summer family barbeque, a jazz evening in Radnor Gardens, events at Strawberry Hill House, an increase in subscriptions, a social media presence.

As a result of the survey responses, a further four new committee members were recruited. We very warmly welcome all five new committee members:

Neil Coburn, June Collins, Sam Kamleh, Andrew Miller and Jeremy Thomas.

Many of the suggestions made at the AGM are being followed up, as other articles in this Bulletin indicate. We would like to thank all who attended the AGM and made useful contributions and suggestions for future action.

## Staying in Touch online

SHRA has just launched a Facebook Group which is designed to supplement this Bulletin, providing up-to-date news and views on issues, activities and events in the village. You can find it by searching 'Strawberry Hill Residents' in Facebook and requesting to join. This group is just for Strawberry Hill and you can also invite neighbours who live here. If you have something to buy or sell, or if you have lost or found something, we suggest signing up to [nextdoor.co.uk](http://nextdoor.co.uk), where you will reach a wider audience, and where we will also be contributing regularly. We are also on Twitter, so do follow us: @SHResidents

## RENEWAL OF SUBSCRIPTION

£5.00 (minimum) PER HOME FOR 2018

This subscription renewal may be made by cash or cheque made payable to Strawberry Hill Residents' Association.

**Please write your name and address below and put your subscription in an envelope with this form and hand it . . . to:**

- A Cathy Bird, 2 Hollies Close, Strawberry Hill, TW14NL or
- B Post Office, 50 Tower Rd, Strawberry Hill, TW1 4PE

Name(s): \_\_\_\_\_

Address: \_\_\_\_\_

\_\_\_\_\_

Postcode: \_\_\_\_\_

Telephone: \_\_\_\_\_

Email: \_\_\_\_\_

Amount: £ \_\_\_\_\_ Date: \_\_\_\_\_

**Larger donations are always welcome!**

## 'The Madness of Cross Deep Hall'

This lovely photographic postcard shows Cross Deep Hall which stood on the riverside in Cross Deep, Twickenham. It was kindly provided by Peter Lomas whose great aunts Eliza and Lucy lived in the house. They can be seen in front of the building, on the left.



A sale plan from 1928 (right) shows the location of the house: Radnor House was immediately to the south and a house called Pope's Garden to the north. The Creek, at the top of the plan, was the narrow waterway that separated the riverside gardens of Cross Deep House, Radnor House and Cross Deep Hall from an island. The creek which flowed into the Thames was filled-in in 1965 and the island and the site of the Hall now form a large part of Radnor Gardens.



Also shown on the plan is a boathouse and teahouse on the edge of the creek. I have a postcard of that building (above) and Peter has confirmed that the ladies in front of it are his great aunts. He has dated the view to no later than 1927 when Eliza died.

Cross Deep Hall was built in the late 1750s by Samuel Scott, the painter. Although Scott lived elsewhere in Twickenham he never occupied Cross Deep Hall. He sold it in 1765 to Frederick Atherton Hindley, owner of next door Radnor House, who in turn also let the house.

Like a number of its neighbours, Cross Deep Hall was to suffer at the hands of enemy bombing in the Second

World War. On 16<sup>th</sup> September 1940 a bomb fell on Radnor House, completely demolishing the building and causing some damage to next-door Cross Deep Hall. As if to finish off the process, the house was hit four years later in June 1944 by a flying bomb. At that time it was occupied by Mr H W Harding, a poet, and Chairman and Treasurer of 'The Poetry Review'. He and his wife were buried in the rubble. In West Middlesex Hospital, whilst recovering, he wrote the poem, 'The Madness of Cross Deep Hall' later published in a book of his poems 'The Pendulum'.

With thanks to Peter Lomas for the picture and information.

**Mike Cherry**

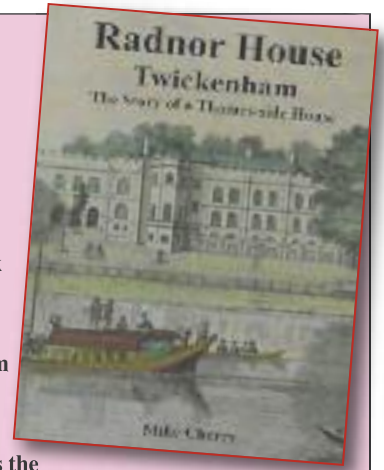
## New Book on Sale

A new book from the Borough of Twickenham Local History Society tells the

story of Radnor House which stood in Cross Deep, Twickenham for nearly 350 years.

The book details the owners, the people who lived in the house, its transition from a private residence to a public building, and its eventual fate in the Second World War.

The book has 84 pages and numerous illustrations and costs £5.00. It is available from the Radnor Gardens Café and the Twickenham Museum, or from the BOTLHS website ([www.botlhs.co.uk](http://www.botlhs.co.uk)) or by post from: 75 Radnor Road, Twickenham, TW1 4NB. Cheques payable to 'BOTLHS' for £6.00 to include p+p.



## Volunteers needed for the Lost Treasures of Strawberry Hill House Exhibition

October 20<sup>th</sup> 2018 – February 24<sup>th</sup> 2019

The Lost Treasures of Strawberry Hill House Exhibition sees some of the most important masterpieces in Horace Walpole's famous and unique collection return to Strawberry Hill for a once-in-a-lifetime exhibition.

Horace Walpole's collection was one of the most important of the 18th Century. It was dispersed in a great sale in 1842. For the first time in over 170 years, Strawberry Hill House can be seen as Walpole conceived it, with the collection in the interiors as he designed it, shown in the objects' original positions.

Strawberry Hill House and Gardens is looking for enthusiastic individuals to join the volunteer team and share the story of this unique house and collection. Volunteer roles are available for the four-month duration of the exhibition, but with ongoing opportunities. These roles are very much visitor-focused, so, if you enjoy talking to people and sharing stories, this could be the volunteer opportunity for you.

If you would like to find out more about becoming a volunteer at Strawberry Hill House, please email: [volunteer@strawberryhillhouse.org.uk](mailto:volunteer@strawberryhillhouse.org.uk) or call: 020 8744 1241

Don't forget the Strawberry Hill House Music and Fun Day on 29<sup>th</sup> July. Always a wonderful day out for the whole family!

## South Twickenham Police Liaison Group (PLG)

The local PLG takes place every three months and everyone is welcome. Local police attend and inform the meeting on the state of crime in South Twickenham ward (within which Strawberry Hill sits). The most recent meeting was attended by Sgt Rumi Miah and CPSO Kyle Mackenzie. The PLG is chaired by Clare Head, and the secretary is Pam Mcmillen (pam-plg-mcmillen@hotmail.com).

Sgt Miah explained that Richmond police have recently merged with Merton, Wandsworth and Kingston, within which are 18 wards, looked after by five sergeants. The Safer Neighbourhood Team (SNT) in each ward consists of two PCs, one CPSO and a share of a sergeant. As well as Rumi, our team includes: PC Scott Brodie, PC Steven Brookes and CPSO Kyle Mackenzie. Kyle has, until recently, been responsible for sending us crime figures for the London Borough of Richmond-upon-Thames. However, he will not be collating these in future. The figures for South Twickenham ward will continue to be discussed at the PLG meetings.

The most recent figures are as follows:

Offence	2018 last three months March – early June	2017 same period	Difference
Burglary	6	11	-5
Criminal damage	6	7	-1
Robbery	2	1	+1
Theft from motor vehicles (MV)	10	7	+3
Theft of MVs	2	10	-8
Theft of pedal cycles	19	21	-2
Grievous Bodily Harm (GBH)	0	0	
Actual Bodily Harm (ABH)	5	15	-10

held its annual Open Day and the weather was sunny for the many residents who turned out to try the woods on the green. The President, Lesley Wallis, said “the aim of the day was to bring in new members to add to the current 38 members”.

Club coaches like Alan Bushell (pictured) were on hand to pass on their expertise. The season runs from April-September and there is a full programme of matches on mid-week and weekend afternoons. As part of Richmond & Barnes Bowls Association, 12 members went on the week-long bowls tour to Torquay which was thoroughly enjoyed by all.

Annual membership costs £90 with a 50% reduction for new members. You can find more information on the website at: [www.strawberryhillbowling.co.uk](http://www.strawberryhillbowling.co.uk)



Anyone for bowls?

Strawberry Hill Bowling Club has been a fixture in the sporting scene of this area since it was founded in 1920. On Sunday 13 May, the Club

KAC is moving to:

The Cloud



Strawberry Hill Cars has amalgamated with Kingston Area Cars and is still operating in the area – despite closing its office on Strawberry Hill Station. It is relocating to the Cloud.

Nothing has changed: the website, app and phone numbers remain the same.

Owner Raj also reports that the company will provide the same level of personal service from drivers who know the area.

The figures show how low the crime rate is in our ward, but it is no less upsetting for victims of crime, and the police always give good crime prevention advice. The next meeting will be held on 20 September, 19.30 – 21.00 at St. James’ Emmanuel Centre in Radnor Road. Please do attend if you would like to chat to neighbours and your local SNT.

The email address of the local team is:

[southtwickenham.snt@met.police.uk](mailto:southtwickenham.snt@met.police.uk)

Rumi also gave his email address:

[rumi.miah@met.police.uk](mailto:rumi.miah@met.police.uk)

## Changes in representation

The council elections in May saw some changes in Strawberry Hill. We say goodbye to Clare Head, David Marlow and David Porter. During their time in office they frequently attended local meetings, including our SHRA committee meetings, and helped us put our views to the Council, as well as supporting us on many local issues. We would like to thank them for their contribution and wish them well for the future.

**WE EXTEND A WELCOME TO OUR NEW COUNCILLORS**

**Richard Bennett**

Green Party –  
[cllr.r.bennett@richmond.gov.uk](mailto:cllr.r.bennett@richmond.gov.uk)

**Michael Butlin**

Liberal Democrat Party –  
[cllr.m.butlin@richmond.gov.uk](mailto:cllr.m.butlin@richmond.gov.uk)

**Katie Mansfield**

Liberal Democrat Party –  
[cllr.k.mansfield@richmond.gov.uk](mailto:cllr.k.mansfield@richmond.gov.uk)



**MERCURY MOTORS**

5 & 7 Strawberry Vale, Twickenham

020 8892 4604

**FORD**  
Parts & Service  
Specialist

Most Makes of Car Serviced  
and Repaired

Established 1941

**Kyzan**

HAIRDRESSING

Get your Summer look with 30%  
OFF ALL COLOUR SERVICES  
EVERY MONDAY

DISCOUNT FOR SENIOR CITIZENS  
AND STUDENTS ALL WEEK

39 Tower Road  
Strawberry Hill  
Twickenham  
TW1 4PS  
020 8891 2255

**CAR SERVICING & REPAIRS**

**VOLVO**

&

**Most other makes**

\* plus \*

**Tyres, batteries, exhausts**

- Very Skilled Technicians
- Great Value
- High Quality

020 8892 4440

MKG 3000



Tower Road, Strawberry Hill, TW1 4PP



**Get into golf**

Strawberry Hill is offering  
four lessons for beginners  
and novices for just £7.50  
each, led by our PGA  
professional, Peter Buchan

[www.shgc.net](http://www.shgc.net)

Call Amanda Godwin on 020 8894 0165  
Email: [secretary@shgc.net](mailto:secretary@shgc.net)  
Strawberry Hill Golf Club, Wellesley Road,  
Twickenham TW2 5SD

## New windows at St James Church

On Monday April 9<sup>th</sup> two new stained-glass windows were dedicated in St James Church. One remembers the Portuguese dead of the First World War. This is the first formal recognition in this country of the Portuguese contribution to the Allied Powers war effort. Thousands of Portuguese soldiers served on the Western front and took heavy casualties. The second window remembers the humanitarian work of former King Manuel II of Portugal who was an active parishioner at St James's.

He served in the British Red Cross and endowed the orthopaedic unit at what is now Hammersmith Hospital.

*The window on the left commemorates the Portuguese war dead, and that on the right the humanitarian work of King Manuel II.*



*Bishop Wilson and Field Marshal Lord Guthrie*

*HE Manuel Lobo Antunes, the Ambassador of Portugal addressing the congregation*



The windows were designed by Caroline Benyon, Fellow of the Master Painters who has designed windows at St Paul's Cathedral, and at St Albans. The windows were dedicated by Bishop John Wilson, and a commemorative plaque was unveiled by the Ambassador of Portugal, HE Manuel Lobo Antunes and by Field Marshal Lord Guthrie of Craigiebank. The Ambassador

then laid a wreath to commemorate the War dead. A guard of honour was provided by 562 Transport Squadron 151 Transport Regiment and other personnel. The music was led by the parish choir and by the chair of the Portuguese community of Camden Town. The congregation, apart from many parishioners, included: HRH Prince

Sebastian of Luxemburg, currently serving in the Irish Guards, prominent members of the Anglo-Portuguese Community, the outgoing Deputy Mayor of Richmond-upon-Thames, Cllr Benedict Dias, Andy Cole Chair of Governors, St Richard Reynolds Catholic Community College, Sir Vince Cable MP, and Dr Ruth Kelly, representing St Mary's University.

# Royal Wedding Street Parties in Strawberry Hill for Prince Harry & Meghan Markle

A number of street parties were held on the Royal Wedding Day. Here are pictures of a few.



Upper Grotto Road



Harry and Megan cut-out from Waldegrave Gardens



Radnor Road



Southfield Gardens



Southfield Gardens

# Hunt for Heroes

**Committee vice-chair Peter Lamb continues his investigation into Strawberry Hill in the First World War**

Exactly four years ago at the beginning of our Great War centenary commemorations, I began my research into the people of Strawberry Hill who served in the conflict. From my standpoint one hundred years on, I can now see this commemoration coming to a close at the end of this year, but for the poor souls who lived a century ago there seemed no end in sight to the suffering and slaughter. The war that was supposed to have been over by Christmas 1914 was dragging on, with the leaders of the Great Powers unable or unwilling to seek a peaceful resolution.

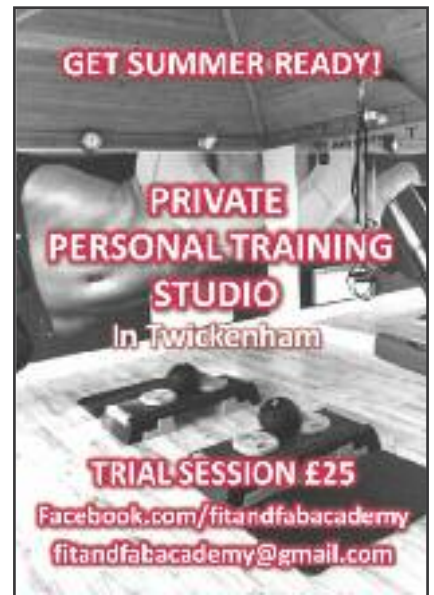
Throughout the spring of 1918, the Germans had launched a massive offensive which threatened to crack the Allied lines, but it petered out, and in August the Allied armies counterattacked. There was a glimmer of success, but no let-up in the number of casualties in the ensuing Battle of Amiens, the Second Battle of the Somme and other

engagements all along the Western Front. Throughout the summer of 1918 the war continued to devour lives in their tens of thousands.

The war memorials in our area commemorate the names of the fallen. Each name is, however, not merely a record of an individual loss, but represents a tragedy affecting the lives of many others. Let me focus on one who suffered such a loss. **Ruth Charlotte Holland** was born in Feltham in 1885. She appears to have been particularly tied to her sister, Helen, who was 17 years her senior, since in 1901 they were both working together in domestic service for a William MacDonagh, a medical practitioner in London Road, Ruth as a housemaid and Helen as a cook. In 1911 they were both resident at **36 Strawberry Hill Road** in similar employment for Thomas Messom, a builder, and his wife Edith. It must have been around this time that Ruth met **Charles Alfred Ladd Heal**. Charles Heal was born in Twickenham in 1885 and following in the footsteps of his father, plied his trade as a blacksmith. It would appear from the Kelly's Directory that their business was in **Cross Deep**. Ruth and Charles married in January 1913 at St Mary's Church, but their marriage was to be short lived. I have not established when Charles enlisted, but at the very end of the war he was in 1<sup>st</sup> Casualty Clearing Station which had moved into the civil hospital in Mons in the days following the Armistice. He died on Christmas Eve 1918. Whether it was from wounds received or from the influenza epidemic that was rife at the time, I cannot tell. Charles had served first as a shoeing smith, then as a driver in the Royal Horse Artillery 7<sup>th</sup> Brigade Ammunition Column. He was buried in the

Communal Cemetery in Mons. Charles Heal's name is on the memorial in St Mary's Church, and it is poignant to note that it was the builder, Thomas Messom, Ruth's former employer, who was involved in the construction of the memorial. One of his brothers, Harold, was killed early in the war in 1915. **Harold Messom's** name is also recorded on the memorial.

Ruth continued to live in Twickenham at 104 Holly Road until the 1940s. She died in 1948. In commemorating the fallen, we must also remember those who, like Ruth, were married for a brief time and had to bear the grievous loss of a loved one in the war for many years thereafter. She never remarried.



**THE COMMITTEE**

**OFFICERS**

**David Cornwell** *Chairman*  
020 8941 6513

**Peter Lamb** *Vice Chair*  
lambpc0950@hotmail.com

**Cathy Bird** *Hon. Treasurer*  
020 8892 6990

**Pamela Crisp** *Hon. Secretary*  
020 8898 1878

**MEMBERS**

**Mike Allsop** *Planning*  
020 8891 1614

**Julia Fiehn** *Bulletin Editor*  
020 8892 3920  
juliafiehn@blueyonder.co.uk

**Neil Coburn**

**June Collins**

**Sam Kamleh**

**Andrew Miller**

**Teresa Read**

**Jeremy Thomas**

The Bulletin is published by the Strawberry Hill Residents' Association and is distributed free, three times a year, to approximately 2400 homes in the area. All text, images and design, copyright Strawberry Hill Residents' Association, except where noted. For advertising or editorial questions, please email: [information@SHRA.org.uk](mailto:information@SHRA.org.uk) Twitter: @SHResidents

**- STOP PRESS - STOP PRESS - STOP PRESS - STOP PRESS -**

**CPZ Decision** by Cabinet Member **Hours of 10.00am to 4.30pm**  
**Monday to Friday for all roads consulted.**  
For details of the proposed experimental CPZ – SEE:  
[www.richmond.gov.uk](http://www.richmond.gov.uk) and then search Strawberry Hill CPZ